



PRIVACY & SECURITY

We care about everyone's privacy.

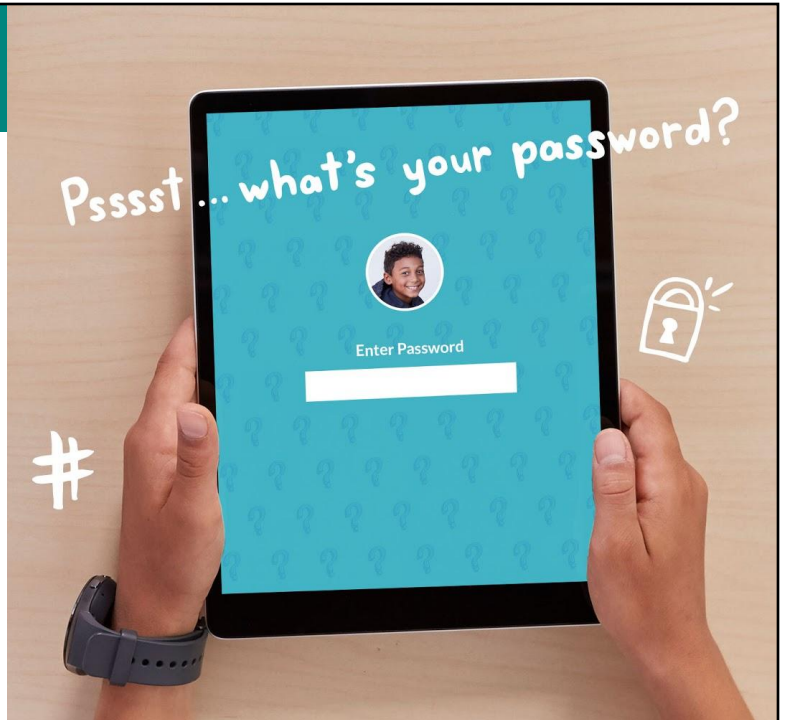
NAME:

CLASS:

DIGITAL CITIZENSHIP
Term 2, Week 4 - Stage 2

Password Power-Up

 common sense education®



How can a strong password help protect your privacy?

Learning intention

We are learning to be safe in the digital world

Success criteria

I can understand the term "password" and describe a password's purpose

I can understand why a strong password is important

I can create a strong password

I can remember my passwords



commonsense.org/education

Shareable with attribution for noncommercial use. Remixing is permitted.

 common sense education®

TASK 1

Read these 2 questions, think about them, then add in the answers:

1. What is something in your life/home that you or your family take steps to protect?
2. Why and how do you protect it?



commonsense.org/education

Shareable with attribution for noncommercial use. Remixing is permitted.

 common sense education®



KEY VOCABULARY

Password (in the online world)

A secret string of letters, symbols, and numbers that you can use to restrict who can access something digital



commonsense.org/education

Shareable with attribution for noncommercial use. Remixing is permitted.

 common sense education®

TASK 2

Read these 4 scenarios and think what could happen if a password were stolen. **Add** in your answers.

Scenario 1

Maya forgets her phone on the bus. **IF** someone found it and figured out her password to unlock it, **THEN** what could happen?

Scenario 2

Jared writes his email address in his notebook and leaves it open while he goes to the bathroom. **IF** someone saw his email address and figured out his email password, **THEN** what could happen?



commonsense.org/education

Shareable with attribution for noncommercial use. Remixing is permitted.



Scenario 3

Kylie goes over to her friend Asia's house to play an online video game. After she leaves, her gaming profile is still saved. Asia's little brother, Ben, turns on the game and sees it. **IF** Ben figured out Kylie's password, **THEN** what could happen?

Scenario 4

Thomas uses an app on his phone to pay bills from his bank account. **IF** someone figured out his password to the app, **THEN** what could happen?



commonsense.org/education

Shareable with attribution for noncommercial use. Remixing is permitted.





Phrase

A group of words that go together and are easy to remember

Read:

One way to make a strong password is to start with a memorable **phrase**. A phrase is a group of words that go together and are easy to remember.

The phrase "I never kiss frogs" could be the password 'inkf'

Or made even stronger by including a capital letter to become 'Inkf'

Or made even stronger still, 'I never kiss frogs on Fridays' becomes 'InkfoF'

And maybe a special number is added to make, like the number of my grandma's house: 'InkfoF27'

The phrase could be the first line of a song, poem or nursery rhyme

"Mary had a little lamb" becomes 'Mhall'

Of course, this only works if you can always REMEMBER your phrase.



TASK 3

Read these 4 questions, think about them, then add the answers:

<p>1. Start with a phrase. Think of a quote or group of words that will be easy to remember. Try to include at least one word that starts with a capital letter. Add your phrase.</p>	
<p>2. Write down just the first letter of each word in the phrase.</p>	
<p>3. Add one or two memorable numbers.</p>	
<p>4. Memorise this password. Repeat your new password in your head so it sticks. Write it some more times.</p>	



Read:

We care about
everyone's privacy.

Password Tips to Remember

- ❖ Start with a memorable phrase.
- ❖ Only your parents or carers should know your password.
- ❖ Never use any private identity information in your password.
- ❖ Create passwords with at least six characters.
- ❖ Use letters, numbers, and maybe even symbols in your password.
- ❖ Respect the privacy of other people's passwords.



commonsense.org/education

Shareable with attribution for noncommercial use. Remixing is permitted.

 common sense education®